

BMS Equalizer DX PlugIn

This is a parametric EQ plugin that conforms to DirectShow/DirectX-standards. This means you can use it in all software where this standard is supported. Excellent for media stream encoders.

It may be used in two separate modes:
Normal – Easy controlled

Suitable to the non audio experts
 There are 11 separate presets available. One of the presets is called "Manual", which forms a 3-band (Bass/Mid/Treble) equalizer offering frequency and level control (not Q-factor). The rest of the presets have configured frequencies and Q-factors set in the EQ ini file, The preset is adjustably mixed/blended to the output through the effect button.

Advanced mode - Suitable to the Audio expert
 In the advance mode all 6 filters that the EQ is based upon is available for control. They are 1 high-pass filter, 1 low-pass filter and 4 fully parametric filters. Each filter may be turned on/off by a double click at its icon. Level, frequency and Q-factor may be adjusted through moving the filters icon or via input fields at the side of the graph. Selection of advanced/normal mode and desired window size is made through the file bms-eq.ini which may be placed in numerous folders, depending on if the settings are just for the logged on user or for all users. The graphics of the user-interface is totally customizable.



Preset Effect 0-100 %



More than 4000 sold

BMS Dynamics DX PlugIn

BMS Dynamics DX PlugIn compatible to the Microsoft DirectX-standard. This means you can use it in all software where this standard is supported. Excellent for media stream encoders.

Advanced functions yet easy to use
While developing the PlugIn we have been listening a to our users. The design of the controls and the functionality is mainly based on their demands. We have been working hard to combine the advanced functionality of the Dynamics with an easy to use GUI.
The GUI is created as a skin which makes it possible to replace elements in the skin.

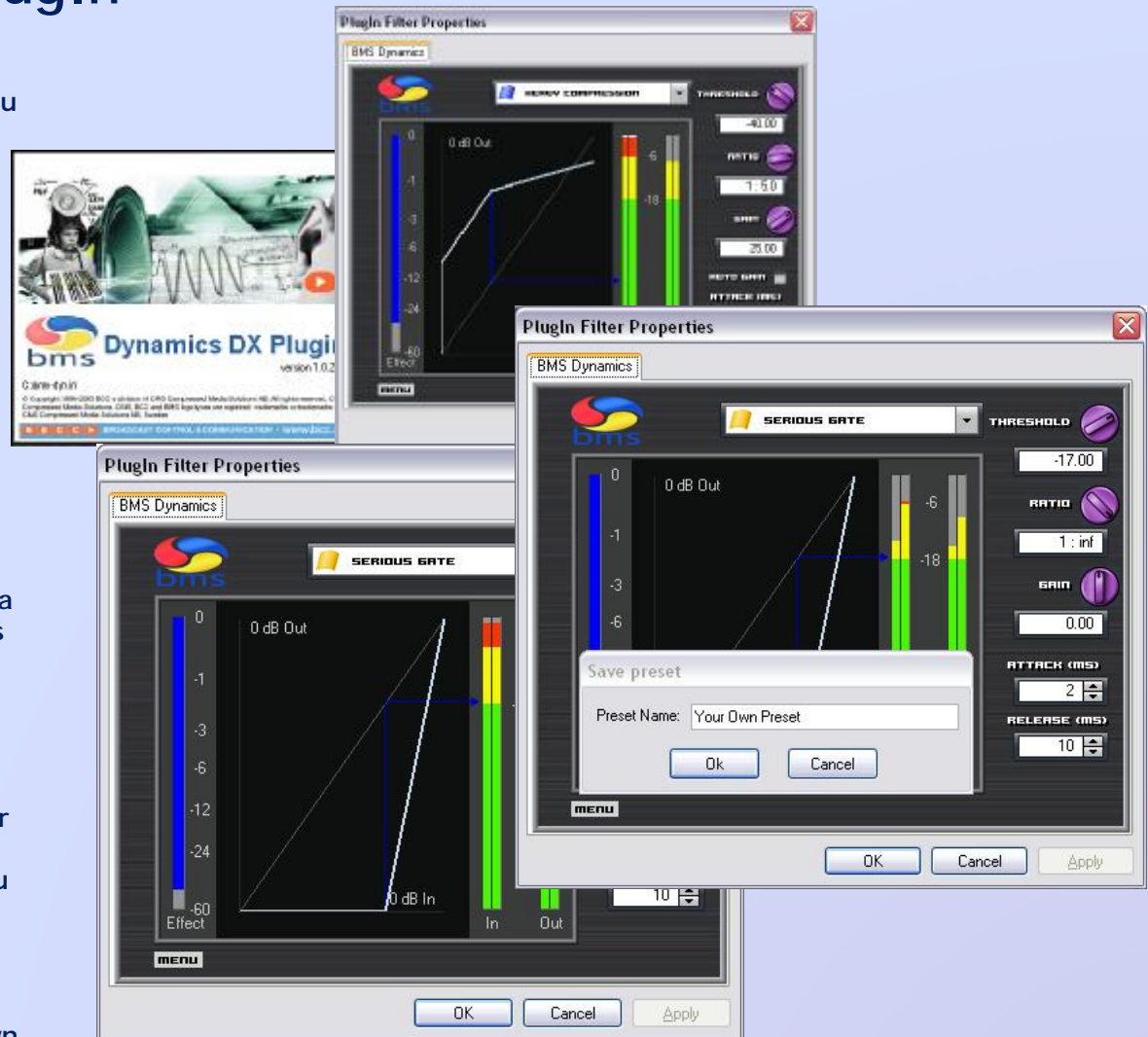
It suites all users

One of the demands from our users was that the dynamics plug in should fit several types of users and their skill. As a result it is possible to select between, easy mode through to a manual mode and then finally an advanced mode. Regardless of which one is used it is possible to do advanced adjustments.

Compressor/Limiter, Expander & Gate:

1. The first mode compressor is based on different presets where the user are able to change the amount of the filter usage.
2. The second mode is the expander mode. In this mode you may improve the dynamics you are working with.
3. Serious gate helps removing undesired audio.

Through the use of state of the art metering and well designed controls it becomes easy to make and save your own presets. Through editing the configuration file you are able to change all the effects of the presets



More than 4000 sold.